

METACLAMP

with Wiper for Triclamp Fitting

Borosilicate Glass

Sanitary range fittings

Directive for pressure equipment 2014/68/EU, Module H (DIN/EN/ISO 9001)

- Directive for pressure equipment 2014/68/EU, Module H (DIN/EN/ISO 9001)
- AD2000 Standards W0/TRD 100
- Sight glass fused to metal conforming to DIN 7079
- Materials to VdTÜV specifications and the DIN/EN designated standards
- glass: Borosilicate to DIN 7080 / DIN 7079

Materials

- Ring: Duplex stainless steel 1.4462, Hastelloy C-22
- Glass: Borosilicate to DIN 7080
- Fused Bush: Alloy 36 (DIN 1.3912)

Material certificates

Certificate of Conformity to EN 10204-3.1 or 3.2

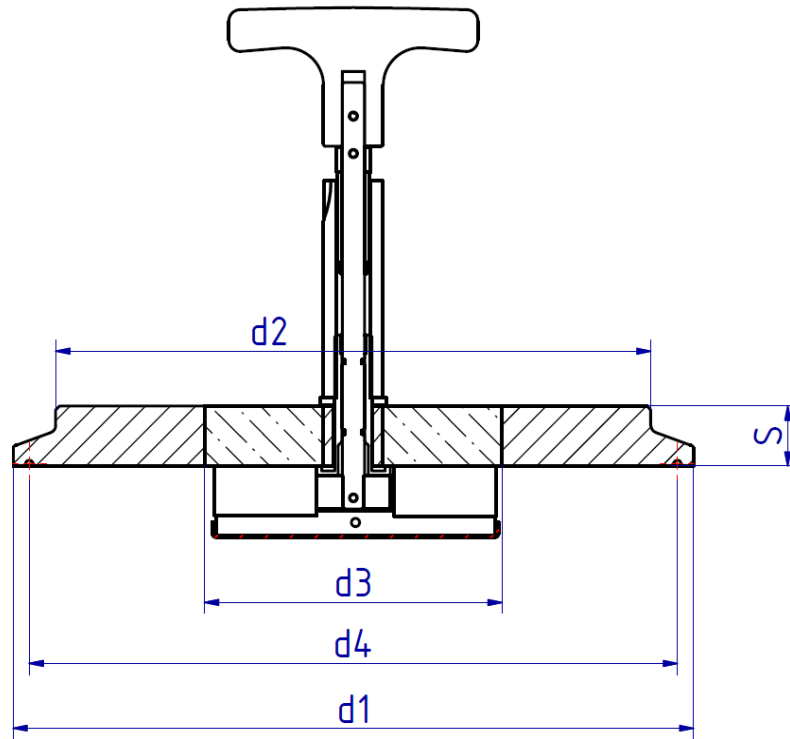
Technical data Manufactured and tested to:

- Directive for pressure equipment 2014/68/EU, Module H (DIN/EN/ISO 9001)
- AD2000 Standards W0/TRD 100
- Sight glass fused to metal conforming to DIN 7079
- Materials to VdTÜV specifications and the DIN/EN designated standards
- glass: Borosilicate to DIN 7080 / DIN 7079

Accessories

- Wiper
- Wiper blade: PTFE or Silicone-rubber
- Contact metal parts stainless steel: V4A





NOMINAL SIZE			d1	d2	d3	d4	S	Max. Operating Pressure
DIN	ISO	ASME BPE						
65	65	3"	91	76	50	83,5	10	10
80	80	3½"	106	90	55	97,0	12	10
100	–	4"	119	101	65	110,0	12	10
	100	4½"	130	114	70	122,0	16	10
–	–	5"	144,5	127	75	134,5	16	10
125	–	5½"	155	138	85	146,0	16	6
–	–	6"	167	152	90	156,5	16	6
150	150	–	183	160	95	174,3	16	6
–	–	8"	217,5	198	120	207,4	18	6
200	200	–	233,5	210	120	225,1	20	6
–	–	10"	268	245	140	257,8	20	6
250	–	–	287,5	266	150	278,4	22	6
		12"	319,3	300	160	309,1	22	6
300	300		338,3	316	160	328,4	22	6

Lumistar Luminaire ESL 51LED

ESL 51LED HK: with bracket for SW 1 (wiper unit)

ESL 51LED KS: with hinged bracket for general use

ESL 51LED B: special sterile version for flange attachment for fitting over flanges, collars, etc.

- **Ideal combination of flush design and smooth surface:**

This sight glass luminaire is designed for mounting on sight glass fittings in universal applications. It is practical either in combined sight and light ports (single-flange version) or with separate ports (two-flange version). Integrated fastening clamp enables attachment to Lumiglas wiper unit SW L.

- **Compact design, powerful light output:**

Glare-free illumination; fits circular sight glass fittings similar to DIN 28120/ DIN 28121 as well as screwed sight glass fittings similar to DIN 11851.

- **Applications in the chemical, pharmaceutical, biogas and food processing industries:**

For illuminating the interior of vessels, tanks, agitators, silos and other generally closed containers and reactors and also in visual flow indicators.

- **Protection class:**

Dust-tight and water jet-proof, IP 65 acc. to DIN EN 60529 / DIN VDE 0470 part 1

- **Operating conditions:**

Independent of vacuum/pressure in the vessel. Under no circumstances should a sight glass luminaire be used as a substitute for the cover flange or instead of the complete sight glass flange assembly, or on its own to close a vessel port.

- **Caution:**

Do not look into light- Danger of impaired eyesight!

- **Maximum admissible ambient temperature:**

50°C

- **Straightforward installation using special attachment, ensuring convenience of use:**

The luminaire is fixed to the mating flange by a hinged bracket in the case of circular sight glass fittings and visual flow indicators. With screw-type sight glass fittings, it is fastened to the groove nut



Lumistar luminaire ESL 51LED HK installed on a screwed sight glass fitting equipped with Lumiglas wiper unit SW 1



Lumistar luminaire ESL 51LED KS adapted to a standard flange

• **Lumistar ESL 51-LED luminaires fit the following nominal sizes:**

- a) Circular sight glass fittings similar to DIN 28120: from DN 25
- b) Circular sight glass fittings similar to DIN 28121: from DN 40
- c) Visual flow indicators from DN 25
- d) Screw-type sight glass fittings similar to DIN 11851: from DN 40

• **Lumistar ESL 51-LED luminaires fit the following nominal sizes:**

- a) Circular sight glass fittings similar to DIN 28120: from DN 25
- b) Circular sight glass fittings similar to DIN 28121: from DN 40
- c) Visual flow indicators: from DN 25
- d) Screw-type sight glass fittings similar to DIN 11 851: from DN 40

• **Operating voltage:**

24 V AC/DC -2.5 W
 Colour temperature: 5000 K
 Luminous flux: 180 lm

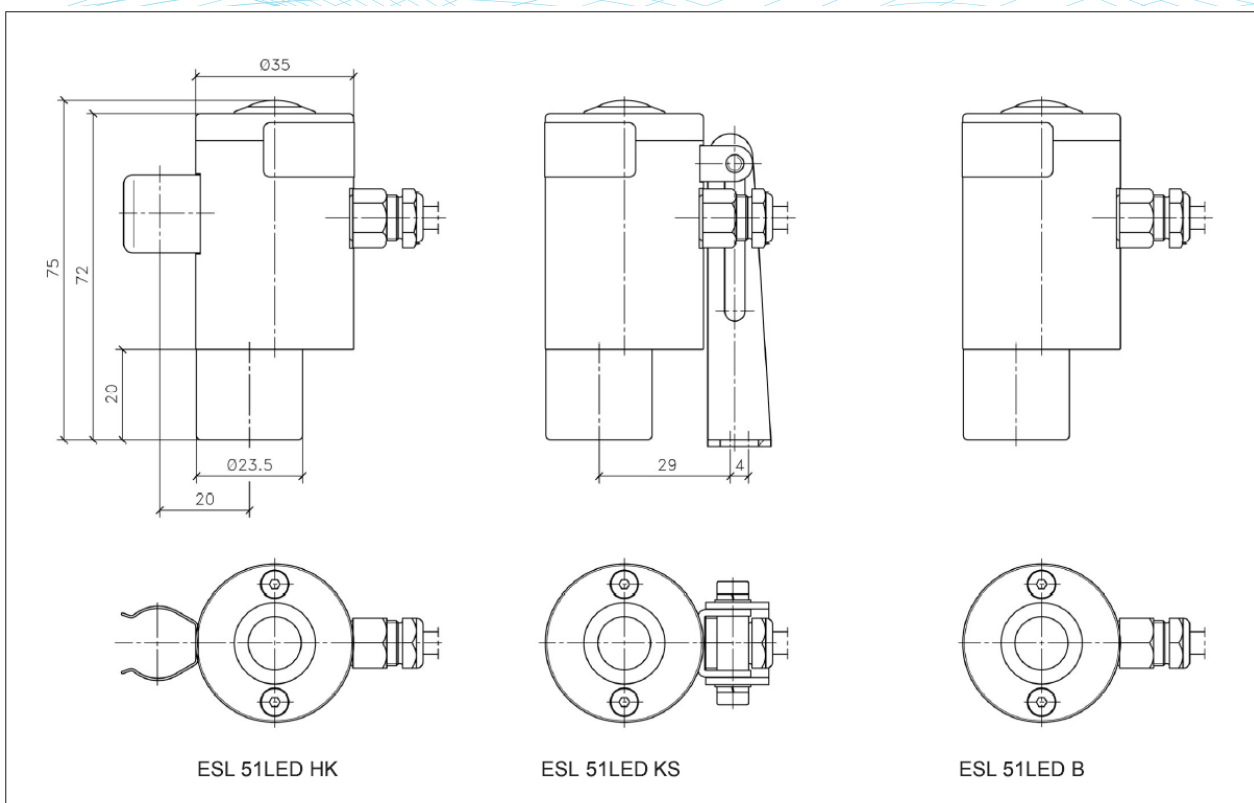
• **Reflected beam angle:**

26°

• **Transformers or AC/DC converters**

for on-site installation or for installing in a control cabinet are available on request. (AC/DC converter. 230 V AC - 24 V DC)

Dimensions of Lumistar ESL 51-LED luminaires:



Description and materials:

- Body and head of luminaire: Stainless steel 1.4404
- Fastening elements: Stainless Steel
- Connecting cable: 3 m (3 x 0.5mm²) factory-fitted, other lengths on request
- Weight: 0.3 kg

Connecting data:

Item	Type	Voltage/ Wattage	Pushbutton	Fastening element	Part No.
1	ESL 51LED KK	24 V AC/DC - 2.5 W	without	Clamp attachment	3541.303.00
2	ESL 51LED HK	24 V AC/DC - 2.5 W	with	Clamp attachment	3541.306.00
3	ESL 51LED KS	24 V AC/DC - 2.5 W	without	Hinged bracket	3541.304.00
4	ESL 51LED KS	24 V AC/DC - 2.5 W	with	Hinged bracket	3541.307.00
5	ESL 51LED B	24 V AC/DC - 2.5 W	without	Hinged bracket	3541.305.00
6	ESL 51LED B	24 V AC/DC - 2.5 W	with	Hinged bracket	3541.308.00